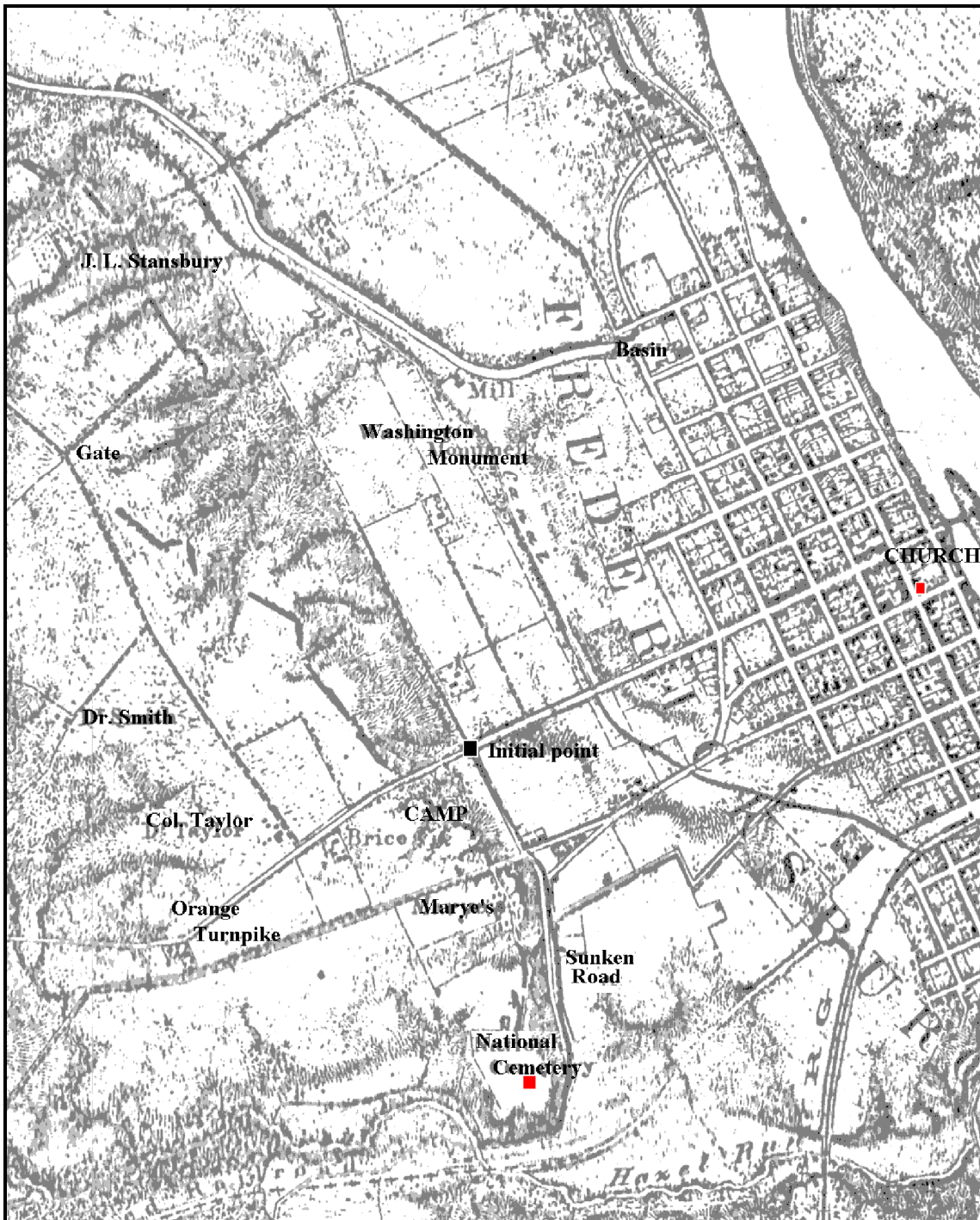


# Earthworks Tour of Fredericksburg and Spotsylvania County

Civil War Fortifications Study Group 1996



Detail from 1867 Map of Fredericksburg surveyed under the direction of Col. Nathaniel Michler

Earthworks Tour of Fredericksburg and Spotsylvania County  
Civil War Fortifications Study Group 1996

Begin at the Fredericksburg Battlefield Visitor Center on Lafayette Boulevard.

*Directions: From I-95, take exit 130A driving east, follow Plank Road/William Street which becomes Blue and Gray Parkway to its intersection with Lafayette Blvd. (about 2 ½ miles). Turn left on Lafayette Blvd./Business Rt.1. Go past National Cemetery to brick Federal style visitor center 1/4 mile on left. Park behind the visitor center. Restrooms/book store.*

**Mile 0.0: Fredericksburg Battlefield Visitor Center**

In late November 1862, the Army of the Potomac, commanded by Maj. Gen. Ambrose Burnside, concentrated on Fredericksburg. Had Burnside forced an immediate crossing of the Rappahannock River, he might have captured the town without a fight. Instead, he waited on the opposite bank for nearly two weeks, allowing General Robert E. Lee time to gather his scattered divisions. Lee positioned his 78,000 men on the heights west of town in an arc that stretched about eight miles from Banks Ford to Hamilton's Crossing. On December 11-12, Burnside crossed his 122,000 soldiers on five pontoon bridges, occupying the town and the flood plain to the south. On December 13, he launched a series of frontal assaults against the nearly impregnable Confederate position with disastrous results.

Marye's Heights above the visitor center was the center of the main Confederate defensive line. The stone fence that bordered the Sunken Road served as a ready-made fortification for Confederate infantrymen. Supporting artillery, entrenched on Marye's Heights above the Sunken Road, swept the field with deadly crossfires.

*Exit visitor center, right onto Lafayette Blvd. Go 0.7 mile and turn left onto Lee Drive at the National Park Service sign. Pull into the parking area on the right at the park tour sign.*

**Mile 0.9 Lee's Hill Hiking Trail**

A paved hiking trail leads to an exhibit shelter that offers a panoramic view of Fredericksburg. This was General Lee's field headquarters during the battle of Fredericksburg. While observing Federal divisions advancing across the open fields below with parade ground precision, Lee stated, "It is well that war is so terrible--we should grow too fond of it." A 30-pounder Parrot Rifle is displayed behind a much-repaired earthwork. The work of the pioneers is described on an interpretive panel. Several other gun pits may be seen in the woods above the hiking trail, and a military road leads downhill to rejoin the trail.

*Continue on Lee Drive 4.8 miles to turn around at parking lot. Notice the Confederate trenches on the left of the road (later on both sides). Some of these rifle trenches were constructed during the battle of Fredericksburg but most were dug after the battle and continually improved throughout the winter of 1862-1863. Several portions were repaired or reconstructed by the Civilian Conservation Corps in the 1930s.*

### **Mile 5.7 Hamilton's Crossing (See Site Map)**

The right flank of the Confederate defensive line was anchored here at Prospect Hill, overlooking the railroad and a depot at Hamilton's Crossing. Here, fourteen guns were entrenched individually and provided with infantry support. The railroad embankment to the front was used for defense. In the woods to the rear, there's a trace of the old military road and a "Y" trench that leads back 1/4 mile to Confederate camps along Mine Road.

*Return on Lee Drive.* At mile 8.7 one of several feeder trenches can be seen crossing the road and intersecting the main Confederate lines at a right angle. From its winter camp far to the rear, a regiment could follow a feeder trench to its correct place in the firing line. *At mile 9.0 turn right into Pickett Circle Drive.*

### **Mile 9.1 Pickett Circle (See Site Map)**

To the front of the circle was the front Confederate line in this sector. The entrenchments were probably constructed after the battle. An old farm drainage ditch leads from the salient of this line out to Landsdowne Road. The Confederates modified and incorporated such agricultural features into their system of fortifications. A secondary Confederate line lies to the rear along Lee Drive. A third parallel line lies in the woods several hundred yards farther to the rear. The three lines were joined by feeders. This was a very sophisticated network that anticipated later doctrines of defense in depth.

*Continue on Lee Drive until end at mile 10.8. Turn right onto Lafayette Blvd. Continue past visitor center to the train station at mile 12.2. Turn left onto Caroline Street and continue through old town Fredericksburg. Continue along the Rappahannock River (Caroline Street becomes Riverside Drive en route) to T-intersection at mile 14.4. Turn right onto Fall Hill Avenue. Continue 0.4 mile to parking lot at canal crossing (look for footbridge and biking trail) at mile 14.8.*

### **Mile 14.8 Fall Hill "Zig-Zag Trench" (See Site Map)**

You are now at Fall Hill, the far left flank of the Confederate defensive line. To reach the trenches, cross the footbridge and bike path to reach the dirt road. Follow the road about 200 yards south past the pond where a path leads uphill. The trench line is at the military crest.

These earthworks were constructed by Brig. Gen. Cadmus Wilcox's brigade before the battle and could be enfiladed by Federal batteries on the far bank of the river. This is an indented line or *cremaillère*, described by Luvaas and Nelson as "more typical of World War I than the Civil War." The trench's notoriety as possibly the Civil War's first "zig-zag" trench caused the city to purchase the land and protect the resource.

*Continue east on Fall Hill Avenue which eventually becomes Bragg Road to its intersection with Rt. 3 (originally the Germanna Plank Road) at mile 17.9. Turn right and continue 0.7 mile to National Park Service pull off on right at monument to the 15th New Jersey Volunteers.*

### **Mile 17.9 Salem Church**

You are now in the heart of the Salem Church battle ground of May 3-4, 1863, where General Lee's divisions frustrated the second prong of General Hooker's Chancellorsville offensive. As you can see, little remains of the battlefield except for the few acres around the church owned by the park service. The brick church dates from 1844. All else has been developed within the last five years. Salem Church battlefield has gone the way of Chantilly.

*Continue west on Rt. 3. You will pass Zoan Church on the right side of the highway.*

### **Mile 21.1 Zoan Church**

Here on the high ground, Confederates dug in on May 1, 1863, to confront General Joseph Hooker's army as it emerged from the wilderness around Chancellorsville. Some remnants of the Confederate rifle trenches survive in the woods on private property. Instead of pushing vigorously toward Fredericksburg, Hooker ordered his forces to withdraw to the vicinity of the Chancellor House and entrench.

*Continue west on Rt. 3 to the entrance to the Chancellorsville battlefield visitor center at mile 25.6 on the right. Park near the visitor center. Restrooms and bookstore.*

### **Mile 25.7 Chancellorsville Visitor Center**

Maj. Gen. Joseph Hooker assumed command of the Army of the Potomac after Burnside's December debacle and in late April 1863 attempted to flank the Confederate army out of its entrenchments. Hooker divided his 134,000-man army into two wings, leaving Maj. Gen. John Sedgwick to threaten Fredericksburg, while he directed a crossing of the Rappahannock twenty miles upstream and moved on the rear of the town via Chancellorsville. General Robert E. Lee with only about 60,000 soldiers left Early's division to hold the town and marched the bulk of his army to meet Hooker on May 1. At this point Hooker appeared to lose his nerve and hunkered down inside his entrenchments at Chancellorsville.

On May 2, Lt. Gen. Thomas J. Jackson conducted a grueling march in order to deploy on Hooker's right flank, which was essentially undefended. Jackson's devastating flank attack on the afternoon of May 2 routed much of the Federal XI Corps but ground to a halt at dark about 0.2 mile west of the visitor center. Jackson and his aides rode out into no man's land to reconnoiter. The party was fired upon by Confederate troops, and Jackson was badly wounded. Maj. Gen. J.E.B. Stuart assumed command of Jackson's corps and pressed the attack the next day. A four-mile loop trail visits many of the surviving field fortifications in this portion of the park.

*Exit the visitor center, right onto Bullock Road. After 0.3 mile, notice the Confederate rifle trench that crosses the road. This line was constructed on May 3 after Federal resistance in this area collapsed. The Federals retreated into prepared earthworks north of Ely's Ford Road. Continue to the T-intersection and park in the pull-off across from the intersection.*

### **Mile 26.6 Hooker's Apex (See Site Map)**

After losing the ground around the Chancellor House on May 3, 1863, Hooker withdrew to prepared entrenchments north of Ely's Ford Road. The line was shaped like an inverted "V" with wings stretching back toward the Rappahannock River. Confederate artillery officer Edward Porter Alexander described this line as "probably the strongest field entrenchment ever built in Virginia." Hooker's defensive posture here enabled Lee to detach two divisions to march to Salem Church and drive Sedgwick's column back across the Rappahannock.

The surviving entrenchments at Hooker's Apex are primarily of four types: artillery positions, infantry rifle trenches, infantry support trenches, and support "bunkers." According to historic maps, the original apex of the main line appears to have been in the vicinity of the Bullock Drive-Ely's Ford Road intersection near the parking area. Trench segment 1 is a retrenchment to prevent a break-through at the weak salient angle. To its rear 50-100 feet are several shelter pits or "fox holes." Trench segment 2 is a truncated artillery position that probably continued south to the apex proper. Remains are visible of as many as eight field guns placed on platforms 12-15 yards apart and separated by traverses. Only three of these platforms are easily recognizable today, and the main parapet is severely eroded. Three longer traverses on the right flank (north) of this line feed back into the gully to the rear and served as "covered ways" by which soldiers could come and go without being struck by sharpshooters.

The remaining trench segments, mostly on private property, are part of a complex for infantry reserves and include four well-preserved "bunkers," nearly identical in appearance. The siting, design, relief, and thickening of the parapets associated with these features suggest that these were emplacements for four heavier caliber guns, such as 20-pounder Parrotts.

General Daniel Sickles III Corps held the apex of the line and most likely constructed the trenches here. The Federals maintained their position here until the evening of May 5 when Hooker ordered a retreat back across the Rappahannock River, ending the campaign.

*Go south on Ely's Ford Road. Turn left on Hooker Trail at mile 26.9. On the left side of the road are trenches constructed by Federals of Hancock's division, II Corps, on May 1-2. Go to the end of the road. Turn right on Miles Drive and right again onto Rt. 3 at mile 27.5. Continue 0.1 mile to Ely's Ford Road and turn right. Pull into the parking lot at the Chancellor House ruin.*

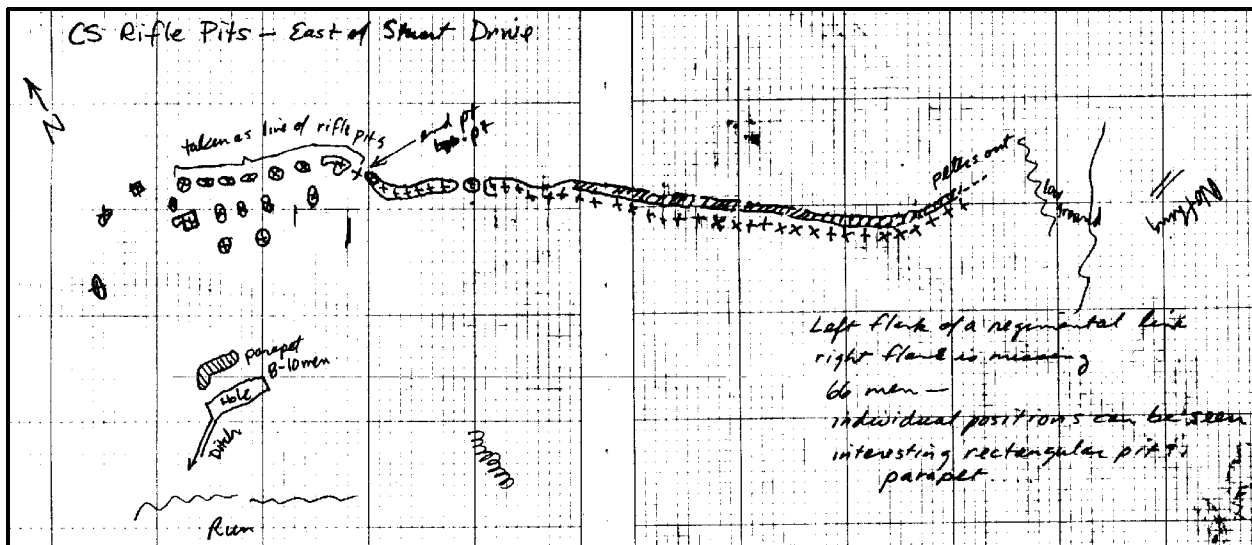
### **Mile 27.7 Chancellorsville**

General Joseph Hooker maintained his headquarters at the inn here during the battle. A Confederate solid shot fired from Hazel Grove struck the porch pillar against which Hooker was leaning, stunning him badly. The Confederates captured the crossroads here on the morning of May 3. In the open fields south of the road, stood Fairfield, historically one of the few farms in the area. A hiking trail passes surviving Federal artillery emplacements beyond Fairfield Cemetery.

Return to Rt. 3. Turn right and continue to mile 28.8 just past the visitor center. Turn left onto Stuart Drive. Continue for 0.3 mile, pull off at the bend where the road crosses a run.

### Mile 29.1 Confederate Rifle Trench

Follow the north bank of the run east into the woods for about 170 yards. You will see a large rectangular dug-out, which may be a military work or an agricultural feature. Directly north of this feature, a Confederate rifle trench begins at the brow of the hill. This trench is notable for its "ragged" character and may well have been dug under fire. An arc of individual fox holes protects the left flank. You can walk along this line and literally count the positions of 66 men by noting deeper scooped out areas of the trench. This appears to have been the left half of a regimental line; the right half does not survive.



Field Sketch of Confederate Rifle Trench East of Stuart Drive (Lowe)

Continue on Stuart Drive. Bear left onto Sickles Drive and continue to Catherine Furnace.

### Mile 30.6 Catherine Furnace Ruins

Logging to provide fuel for this early 19th-century iron smelting operation and others like it in the area was responsible for turning much of the region into a dense tangle of second-growth forest called the Wilderness. Significant remains of the furnace operation can be seen on top of the hill, consisting of pits, flumes, and building ruins. Confederate troops held Federals at bay here on May 2, while General Thomas J. Jackson conducted a march to strike Hooker's right flank, which was "hanging in the air" along the Germanna Plank Road (Rt. 3).

Continue south on the Old Furnace Road (Jackson Trail East). You are following the route taken by Stonewall Jackson's Corps as it marched to attack the Federal right flank on May 2. The unpaved trace retains much of its wartime character. At mile 33.5, turn left on Brock Road. At mile 33.8 turn right to continue on Jackson Trail West. At mile 36.0, you will begin

to see the trace of a Federal rifle trench on the left side of the road. This is the left flank of the Federal II Corps position during the battle of the Wilderness, May 5-7, 1864. *Jackson Trail rejoins Brock Road at mile 36.3. Turn left and continue to the stop sign at the intersection of the Orange Plank Road. Pull into the National Park Service pull-off on left.*

### **Mile 37.5 Brock Road-Orange Plank Road Intersection**

Union Lt. Gen. Ulysses S. Grant and Confederate General Robert E. Lee confronted each other for the first time here in the dense second-growth forest called The Wilderness. On May 4, 1864, 118,000 troops of Grant's Army of the Potomac crossed the Rapidan River at Germanna and Ely's fords and moved south to threaten Richmond. General Lee directed his Army of Northern Virginia, 62,000 strong, to march east from the vicinity of Orange and stop the Union spring offensive. The armies collided on May 5, when the Federals' line of march crossed two parallel east-west roads--the Orange Turnpike (modern Rt. 20) and the Orange Plank Road (Rt. 621). Though only about three miles apart, these roads were separated by the nearly impenetrable thickets that were characteristic of The Wilderness.

This intersection was the scene of some of the heaviest fighting during the battle of the Wilderness. The wooded area south of the road is called Hamilton's Thicket, a tract of land that is privately owned and slated eventually for development. Several preservation groups have been negotiating to purchase Hamilton's Thicket for donation to the park. It is one of the most threatened parcels of blood soaked ground in the country.

*Continue north on Brock Road. Note the cannon monument at mile 37.7 marking the spot where Federal General Alexander Hays was killed on May 5, 1864, while rallying troops. At the T-intersection turn left onto Rt. 3 (Jackson's soldiers turned right here to attack the Federal right flank at Chancellorsville). Continue west to the intersection with Rt. 20 at mile 40.2. Pull into the convenience store parking lot on the right.*

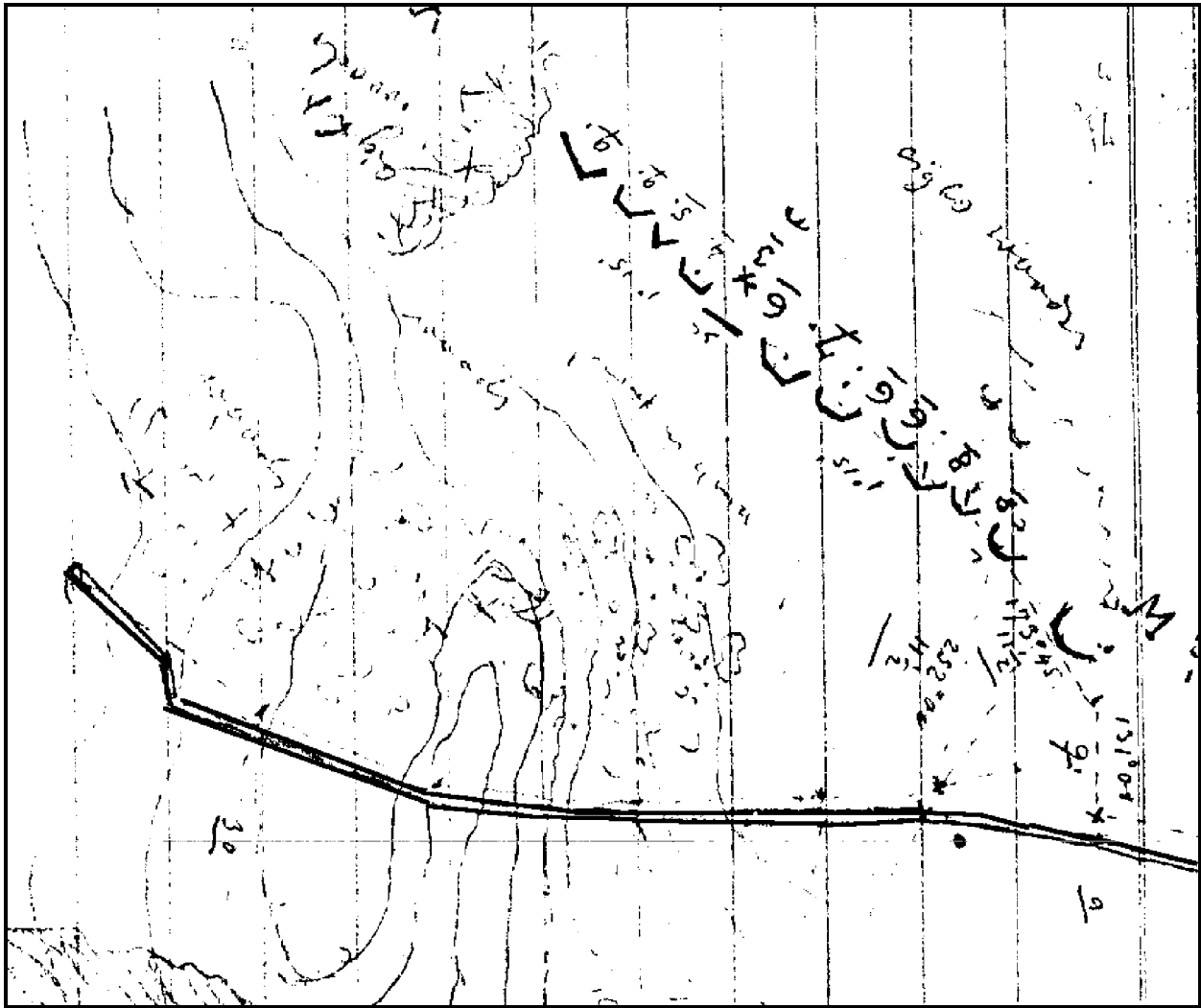
### **Mile 40.2 Rest Stop**

This is the intersection of the Germanna Plank Road (Rt. 3) and the Orange Turnpike (Rt. 20), very near General Ulysses S. Grant's headquarters during the Battle of the Wilderness. The Wilderness Tavern stood on the high ground to the east. Wilderness Run flows through the open fields south of the intersection past the Lacy House (Elwood) which still stands on park service property. The Lacy House served as the headquarters of the Federal V Corps. On May 5-6, 1864, the Army of the Potomac's reserve artillery was parked in the open fields because there were few opportunities to deploy batteries in the dense wilderness. Stonewall Jackson's amputated arm is buried in the family cemetery there.

*Follow Rt. 20 for 1.1 miles. Pull off at the side of the road at mile 41.3 where the electric wires cross the road.*

### **Mile 41.3 Federal 12-gun Battery (See Site Map)**

Although difficult to find, the park's hiking trail begins in the woods on the south side of the



John Weyss's Field Sketch of 12-Gun Battery from Postwar Survey of the Wilderness (1867)

road. It is marked by an orange post. Follow the trail along the well preserved V Corps trenches for about 0.25 mile. On the left of the trail is a Federal artillery position. Twelve guns are entrenched behind individual *demi-lunes*. Several of the guns have rectangular holes in the rear where ammo chests were dismantled from the limber and entrenched. Behind the battery is a road trace that led from the Lacy House. The siting of batteries in the Wilderness was determined by the few farm roads that traversed the area.

*Continue on Rt. 20 to the Wilderness exhibit shelter on the right at mile 42.1*

### **Mile 42.1 Gordon Flank Attack Trail (See Site Map)**

Fighting erupted here before noon of May 5, 1864, as the advance guard of Lt. Gen. Richard S. Ewell's Confederate corps, marching on the Orange Turnpike, struck elements of Union Maj. Gen. Gouverneur K. Warren's V Corps near Saunders Field, the clearing around the Wilderness Exhibit Shelter. At first driven back, the Confederates counterattacked, established a line of battle at the western edge of the field in the trees, and resisted determined

Union attacks across the field. Fighting spread into the surrounding woods as two divisions of Union Maj. Gen. John Sedgwick's VI Corps arrived north of the turnpike on Warren's right flank. Both sides entrenched. In late afternoon, May 6, Confederate Brig. Gen. John B. Gordon stealthily moved his soldiers through the woods north of Saunders Field to attack the exposed Union right flank. Gordon's surprise assault shattered two Federal brigades before darkness ended the battle.

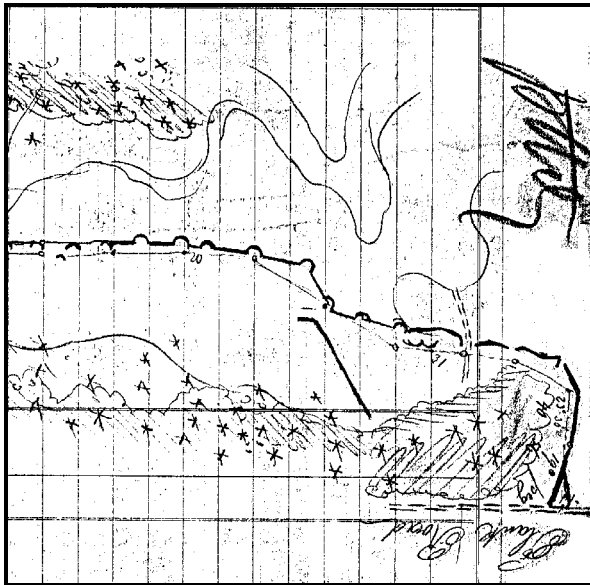
The exhibit shelter is at the center of Saunders Field, where the battle of the Wilderness began. A two-mile loop trail visits a maze of trenches constructed on May 5-6 primarily by General Edward Johnson's and Jubal Early's Confederate divisions and the Union VI Corps. During the night of May 5-6 the Confederates constructed a new line nearly at a right angle to the initial position and faced several long sections of trench in the opposite direction.

*Continue west on Rt. 20 for 0.2 mile and turn left on Hill-Ewell Drive at mile 42.3. Observe the entrenched line of Confederate General Richard S. Ewell's Corps on the left side of the road. Hill's Corps takes over after about two miles. The total combined line was originally more than five miles long. At the grand brick entrance to Fawn Lake, turn right onto the Orange Plank Road. Go 0.6 mile and turn left into the National Park Service parking lot.*

#### **Mile 46.4 Widow Tapp House Site**

On the morning of May 6, 1864, Union Maj. Gen. Winfield Scott Hancock launched a powerful attack from Brock Road with the II Corps and additional units against Lt. Gen. Ambrose P. Hill's Corps. Hill's Confederates, disorganized from the previous day's fighting, were overwhelmed and came streaming back out of the woods into the Tapp clearing. The Confederate right flank had collapsed. At the height of the crisis, the advance units of

General James Longstreet's corps reached the field after a hard march. General Robert E. Lee met Gregg's Texas Brigade here and directed them into the fight. Hancock's Federals were driven back toward the Brock Road. While trying to organize another assault, Longstreet was wounded accidentally by his own men and carried from the field.



J. Strasser's Field Sketch of Works  
South of Tapp Field (1867)

At the Tapp farm, the Confederates entrenched a secondary line, studded with artillery, in the woods south of the parking lot. To find this line, skirt the trees west to near the displayed cannon where you should be able to pick up the trench. The line extends for 2/3 mile.

*Exit left from the parking lot and return to the Brock Road-Orange Plank Road intersection.*

*Turn right and follow Brock Road 9.8 miles toward Spotsylvania. This is the route taken by the Federal army when it disengaged on May 7 and marched to capture the crossroads at Spotsylvania Court House. Confederate cavalry delayed the Federal advance. You will pass through Todd's Tavern intersection at mile 52.8. The Federal II Corps reached here at the opening of the Wilderness Campaign and entrenched before being recalled to join the fighting on the Orange Plank Road.*

*Turn left onto Grant Drive at the park service sign. Pull into the exhibit shelter parking lot.*

### **Mile 56.8 Spotsylvania Exhibit Shelter**

The battle of Spotsylvania Court House began in this area on May 8, 1864, as advance elements of the Federal V Corps encountered Confederate infantrymen, who arrived barely in time to secure the important crossroads. Fighting raged in the fields to the south, an area known as Laurel Hill. The monument at the entrance to the park marks the spot where General John Sedgwick was killed by a sharpshooter's bullet on May 9, 1864. Displays in the exhibit shelter recount the battle. Restrooms are available. After an initial repulse, the Union V Corps entrenched here. These trenches can be seen along the south side of Grant Drive.

*Continue on Grant Drive for 0.4 mile to near the bottom of the long slope. Pull over before crossing the run.*

### **Mile 57.2 The Gallery (See Site Map)**

Locate the segment of rifle trench on the north (left) side of the road and follow it into the woods. Cross the narrow run. This area was the far left flank of the Federal Army until May 10 after which the fighting shifted to the Confederate Salient farther to the east. Here the V Corps line was refused back along the creek to your front.

The trenches here consist of a main line facing east and a series of eleven traverses that step up the high ground in the form of a "gallery," facing south. The traverses have been improved to provide cover for infantrymen. This appears to have been a holding area for a regiment. The narrow ravine running from the rear of the gallery leads past a series of other holding areas--a secondary gallery, and several parallel rifle trenches. At the crest of the hill, Federal guns are individually entrenched in *demi-lunes*, some with ammo holes to the rear. These guns were sighted to enfilade the Confederate trenches at the Bloody Angle.

*Continue on Grant Drive. On the left side of the road, observe trenches of the Federal VI Corps that were constructed after the assault on the Bloody Angle of May 12. After 0.7 mile pull into the parking lot for the Bloody Angle.*

### **Mile 57.9 Bloody Angle (See Site Map)**

At 4:30 a.m., May 12, 1864, 20,000 men of the Federal II Corps, commanded by Maj. Gen. Winfield Scott Hancock, assaulted and overran the Confederate "Mule Shoe" salient, capturing as many as 3,000 Confederates, two generals, nearly 30 colors, and twenty guns.

By 6:00 a.m., the Federal VI Corps had joined in the assault on the right of the II Corps, and Burnside's IX Corps began closing in on the east face of the salient. Maj. Gen. John B. Gordon organized a series of counterattacks to close the breach in the Confederate line. For twenty hours, the forces here battled face to face in the longest sustained firefight of the Civil War. After the war, Francis Walker of the II Corps wrote with little exaggeration: "Never before, since the discovery of gunpowder, had such a mass of lead been hurled into a space so narrow as that which now embraced the scene of combat." The Confederates recaptured much of the lost ground but were withdrawn after midnight when a new line of earthworks was completed across the base of the salient.

The hiking trail leads along the area of the Federal breakthrough. The trenches here have been heavily impacted by visitors, and parts have been reconstructed. There are sections of "dead ground" in front of the Confederate line that enabled the Federals to get close to the line in the early morning fog without being fired upon. This undoubtedly contributed to the collapse of the line. From the 22" oak marker, look to the left front to see a trace of the trench dug by the VI Corps to join into the captured portion of the salient. The works from here to the right were reversed by the Federals. From the East Angle (beyond the eastern parking lot), walk to the front of the cleared works and toward the trees to the right. In these trees, along a line extending down to the ravine, elements of the Federal II Corps regrouped. Walking down the central parapet, observe the chaos of holes and slit trenches dug under fire. Farther down the hill, the trenches gradually sort themselves out and become more organized. This provides a graphic picture of the confusion that existed here on the morning of May 12.

*Exit the parking lot and continue on Anderson Drive following the west face of the Salient. Bear to the right at the intersection and continue to the parking lot at the end of the road.*

### **Mile 59.3 Lee's Final Line (See Site Map)**

From here to the site of the Harrison House, a distance of about 500 yards, are some of the more interesting fortifications in Virginia. The line was sited by General Lee's chief engineer, M. L. Smith (who laid out the defenses of Vicksburg). It was roughed out while battle raged at the Bloody Angle and was continually strengthened during the following week. The Federals made one attempt against this line on May 18 but were decisively repulsed. The fortification consists of a main line punctuated by artillery at regular intervals and secondary support trenches. Col. Theodore Lyman visited these fieldworks in April 1866 and wrote:

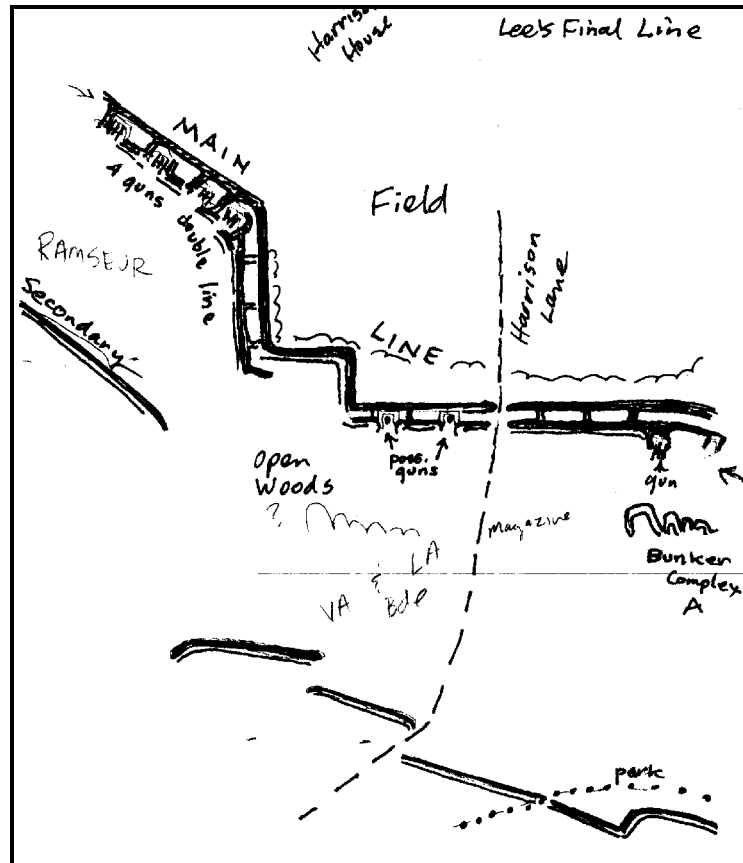
This was a curiosity of field fortification! The high parapet was not only traversed as often as every ten or twelve feet, but was inclosed in the rear, so that the line was divided into a series of square pens with banks of earth heavily revetted with oak logs. From space to space was what looked like a wooden camp chimney, but in truth was an elevated post for sharpshooters with a little loop hole in front. I never saw any like them. We walked along the parapet till we got opposite the Harrison House.

The enclosed pens described by Lyman can be readily observed in the area directly south of the Harrison House site.

In hindsight, the Confederates should have abandoned the “Mule Shoe” Salient and constructed their main line here in the first place. The “Mule Shoe” developed out of the accidents of battle, and General Lee gambled to maintain it with almost disastrous results.

Segments of this line were heavily damaged by tree-throw that occurred during a winter 1994 ice storm. Larger pine trees with a shallow root structure were uprooted tearing out chunks of parapet. The park has girded many of the remaining pines on the parapets as an experiment in earthworks management.

*Return on Anderson Drive. Bear right at the intersection onto Gordon Drive following the Confederate reserve line past the Harrison House site. Bear right at the next intersection onto Burnside Drive. You are now entering the IX Corps sector, Potter’s division. Go 0.6 mile from intersection and pull off to the right on the crest of the hill.*

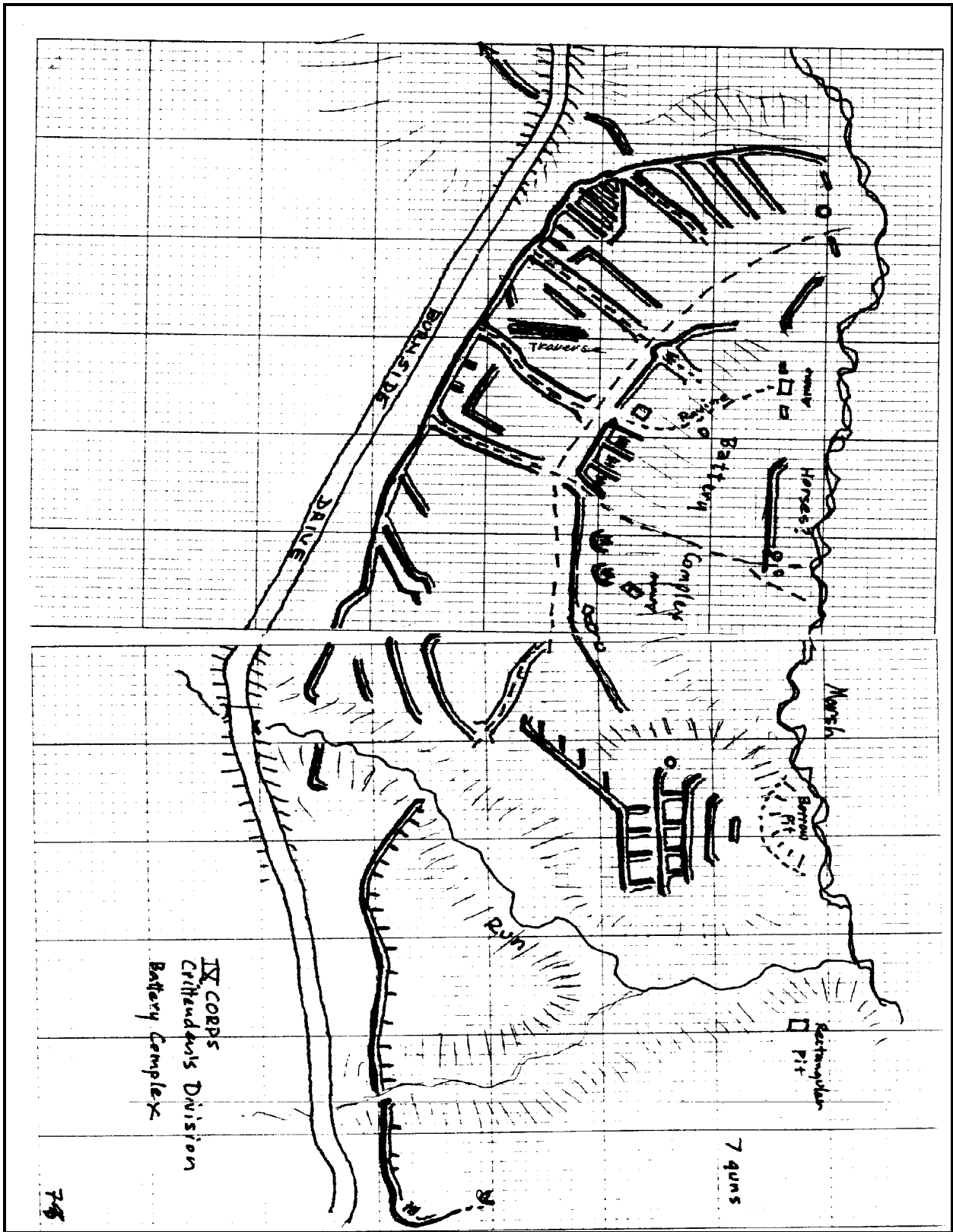


Field Sketch of Lee's Line South of Harrison House (Lowe)

### **Mile 61.0 Crittenden's Division Battery Complex (See Field Sketch Below)**

Most of the IX Corps entrenchments at the Wilderness now lie beneath the Lake Wilderness subdivision. At Cold Harbor, the IX Corps lines have all but disappeared. Perhaps, the finest examples of IX Corps field fortifications survive here at Spotsylvania.

About noon, May 12, Crittenden's Division of Burnside's IX Corps advanced against the east face of the Confederate Salient. Burnside's men made little headway and entrenched here where they remained for nearly a week. The trench complex east of the road contains many interesting examples of field fortification, including positions for six guns that were sited on



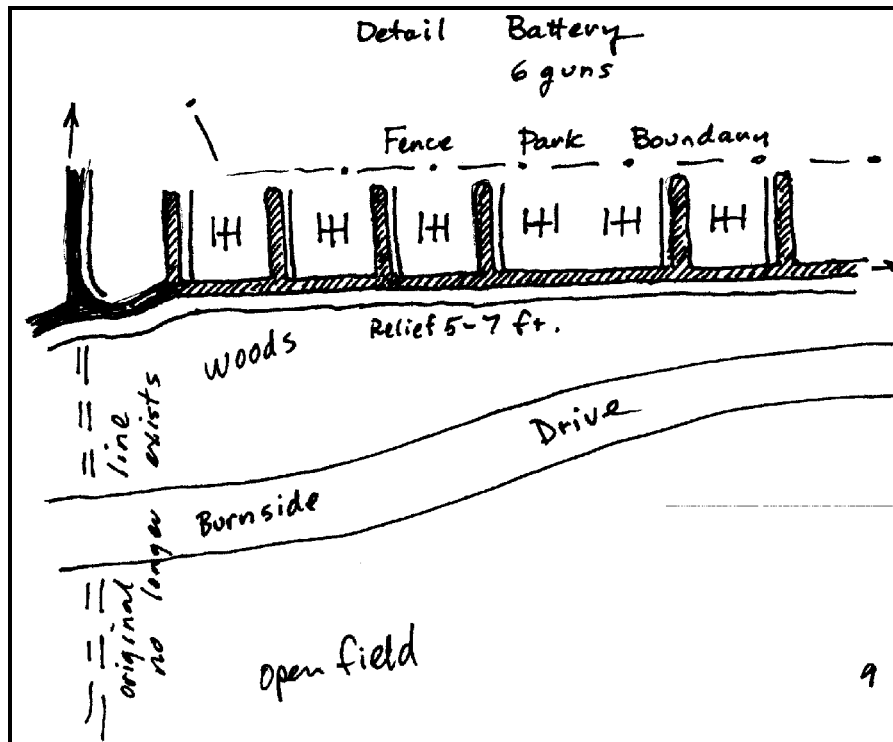
Mile 61.0 Field Sketch of Crittenden's Division Battery Complex (Lowe)

the back side of the slope and aimed to fire indirectly over the infantry support trenches to their front. The right flank of the line boasts a gallery of traverses and covered ways. A second gallery, heavily traversed, is on the hillock behind the left flank. A road trace leads from the front line down to the swamp in the rear.

*Continue on Burnside Drive for 0.7 mile and pull off at the side of the road.*

### **Mile 61.7 Six-Gun “Bay Battery”**

This is an example of a “bay” style battery for six guns, constructed by Willcox’s division of Burnside’s IX Corps. This style of entrenched battery appears distinct to IX Corps fieldworks.



Field Sketch of IX Corps Battery (Lowe)

*Continue to the end of Burnside Drive and turn left onto Rt. 208. Continue straight ahead. Rt. 208 becomes Lafayette Blvd. after entering Fredericksburg and will return you to the Fredericksburg Battlefield Visitor Center.*

Materials written and compiled by David W. Lowe, Cultural Resources GIS, Washington, DC